



Support and Safety Through Person Centered Coordination

Peter Larson – DHS Adult Protection Training and Communications Specialist

Kelli Klein - DHS Adult Protection Resource Specialist

Andrea Anderson - DHS Adult Protection Resource Specialist



Mary McGurran
Unit Manager



Angelo Flowers
Unit Supervisor

DHS Adult Protection Unit



Melissa Vongsy
Policy Program
Consultant



Lindsay Brekke
Quality Assurance
Program Consultant



Margie Aranda
MAARC Operations
Manager



Donae Sturdivant
MAARC Contract
Administrator



Joe Woyee
Research Analyst



Kelli Klein
Adult Protection
Resource Specialist



Andrea Anderson
Adult Protection
Resource Specialist



Peter Larson
Training &
Communications



Lisa Shock
Training &
Communications

Learning Objectives

- Understand how the Vulnerable Adult Act (VAA) supports coordination and data sharing

Recognize APS authority to engage with partners (tribal, support persons, institutions)

Explore person-centered practices that uphold dignity and rights

Learn how MDTs complement APS individual engagement with systems-level response



Viewing Maltreatment Through a Person-Centered Lens

An essential part of addressing maltreatment is viewing maltreatment through a person-centered lens.

- Everyone needs help sometimes.
- APS promotes safety and well-being for all and helps make sure those in need are safe and supported.



MN APS Vision



- **Vision:** Support adults vulnerable to abuse to live in safety and dignity consistent with their values
Mission: Provide support and protection through tribal, state, and county partnerships

Core Principles:

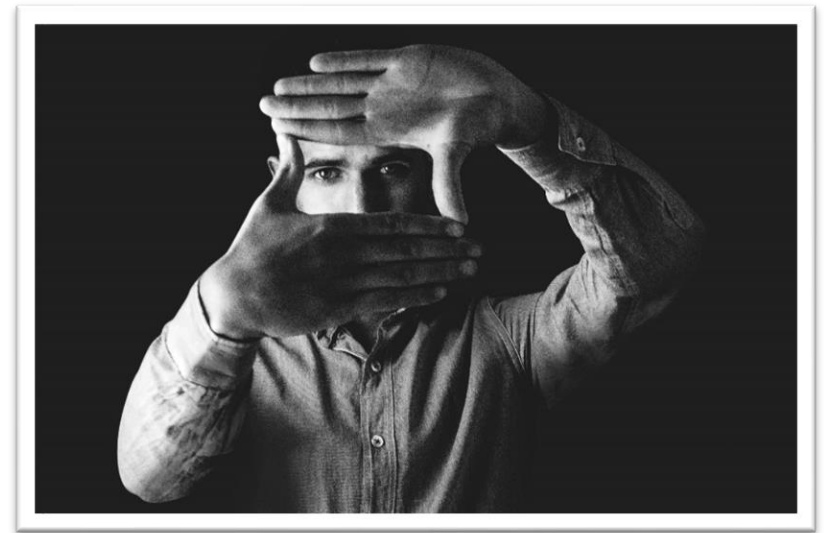
- Adults sometimes need support
- Choice and safety are balanced
- Focus on least restrictive outcomes

Reframing APS through a Person-Centered Lens

Adult Protective Services (APS) promotes safety and well-being for all and helps make sure those in need are safe and supported.

Using a person-centered lens can reframe:

- **Allegations are opportunities to engage, not blame**
- **Engagement prioritizes trust and dignity**
- **Interventions support individual goals**



Vulnerable Adult Act (VAA) In Action

1980

Vulnerable Adult Act (VAA) adopted

2013

Implementation of structured decision making and standardized tools

2022

Phase 1 Redesign begins(person centered practice)

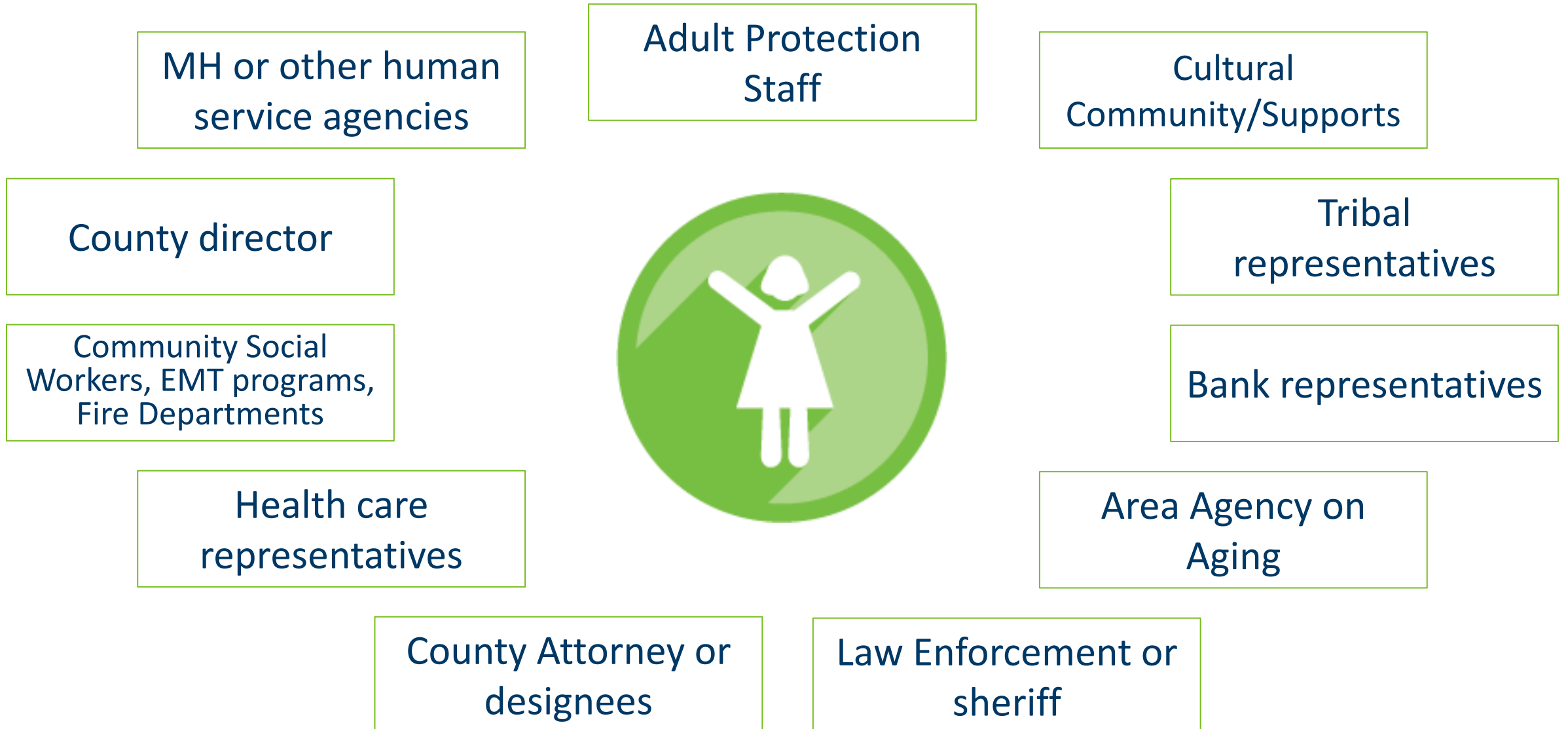
2023

Phase 2 - program funding to counties and tribal nations

VAA in Practice: Coordination and Data Sharing

- APS may coordinate with:
 - Law enforcement, county/tribal agencies
- Based on need to prevent maltreatment
 - Based on need to safeguard the adult

APS Partners in Action



Coordination with Other Entities

VAA allows data sharing and coordination with:

- Law enforcement
- Lead investigative agencies
- Licensed providers
- Reporters
- County and tribal agencies
- Financial institutions
- Case managers



Ensure a Dignity First Approach

- Balance adult autonomy and safety
- Strategies: listening, informed choice, least restrictive planning
- Safety planning unique to adult's culture, health, and goals



Financial Exploitation

Safe Seniors Financial Protection Act

The Safe Seniors Financial Protection Act, Minnesota Statutes Chapter 45A, allows broker dealers, investment advisers, and financial services providers (such as banks and other regulated lenders) to: (1) notify the Department of Commerce or MAARC if they reasonably believe that financial exploitation of an eligible adult is occurring, may have occurred, or is being attempted; and (2) allows the financial services provider, the Department of Commerce or law enforcement to delay disbursements from or place a hold on an account of an eligible adult under specified circumstances for up to 25 business days.

Safe Seniors Financial Protection Act allows delayed transactions, reporting

APS coordinates with Dept. of Commerce and law enforcement to protect adults

Safety and Self Determination

Strategies that maximize the adult's independence and choice

Understand the adults's goals, lifestyle and health priorities

Respecting autonomy vs preventing harm



Safety planning



Adult protective services are person centered and safety planning can be unique for each adult who is vulnerable

All interventions are based on principle of least restrictive.

Balance

APS works to balance self-determination and choice with safety from maltreatment in assessment, service planning and intervention to stop, reduce risk and prevent maltreatment.



Multi Disciplinary Teams



Role of MDT's

MDTs may:

- Provide education, consultation, service coordination

Enhance systemic response beyond one-on-one APS work

Support prevention and intervention planning

Case Closure and Evaluation

Case Closure

Case Closure

Communication Letter

- Closure considers: safety, supports, dignity, least restrictive service used
- Future metrics: client satisfaction, well-being, goal alignment

APS as a Team Effort



Engagement includes
adult, support network,
and community partners

Collaboration ensures
comprehensive, respectful
response

Thank you!

Contact:

Email: dhs.adultprotection@state.mn.us

651-431-2609

Website: <http://mn.gov/dhs/>