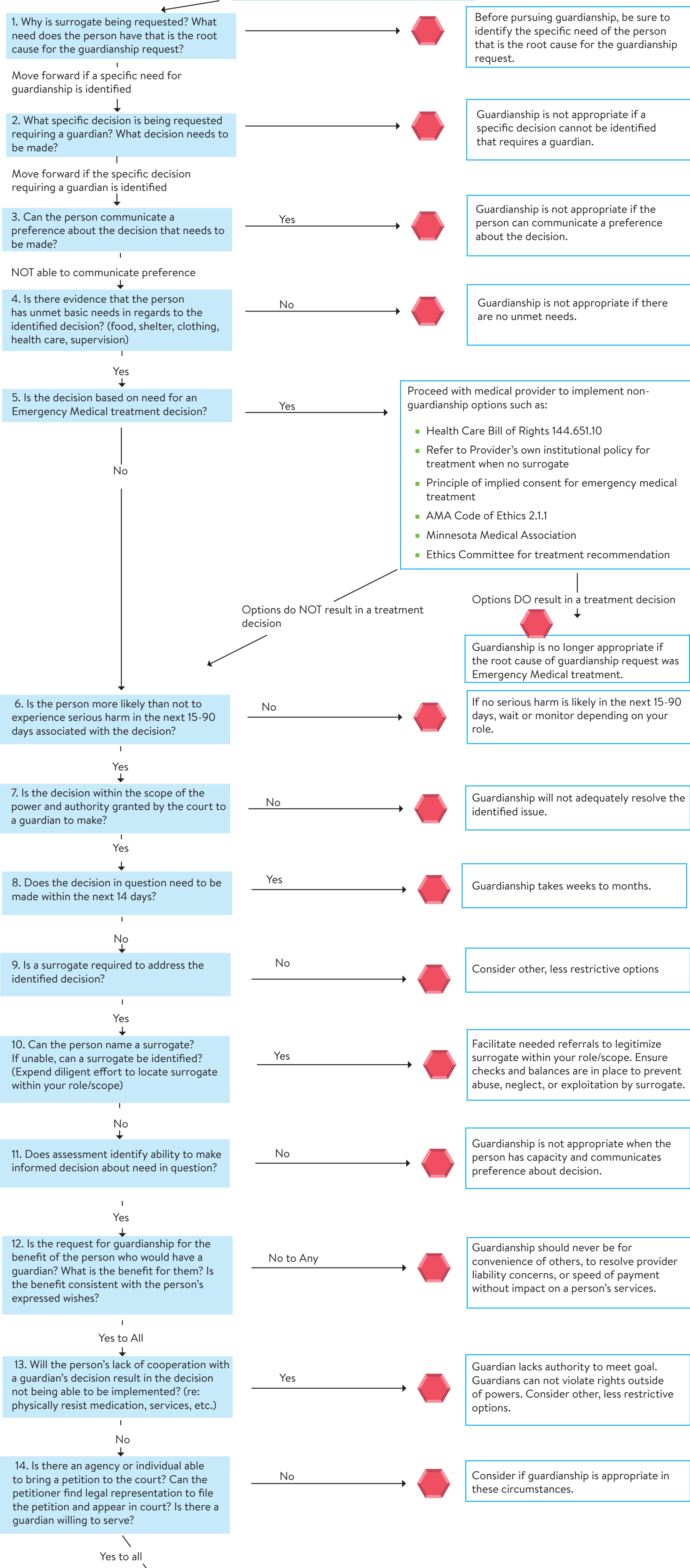
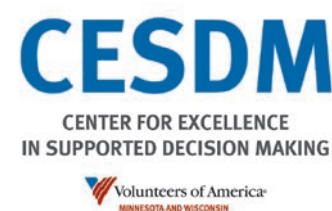


- Guardianship is a restrictive intervention that removes some of a person's rights. Therefore, presume guardianship is not needed until all less restrictive options are exhausted and documented.
- Accommodate for the person's communication abilities in order to explain and clarify to the person the required decision that needs to be made. Use plain language and communicate in a way the person can understand the issue and context, including providing the person options regarding the decision and explaining the consequences associated with each option.



Is guardianship the most appropriate intervention?



Work with attorney to initiate petition for guardianship with limited powers required to meet current identified needs. Involve the person in the process using person centered practices.