

WELCOME to Minnesota Elder Justice Center: Center Partners' Meeting

Oct. 12, 2018

MINNESOTA
ELDER JUSTICE
CENTER

AGENDA

- **2:00 – 2:15 | Introductions / Announcements**
- **2:20 – 3:10 | Minnesota’s Medicaid Fraud Control Unit**
- **3:10 – End | Public Health Responses to Elder Abuse Primary Prevention in Elder Abuse**

MEJC Announcements – Surly Event

[Buy your ticket today](#) and join the Minnesota Elder Justice Center for a casual happy hour at Surly Brewing to support our work to prevent elder abuse.

Enjoy appetizers and Surly beer, participate in our wine pull, and try and win one of our great gift baskets with our basket raffle. Wine pull tickets and basket raffle tickets will be available for sale at the event.

[Tickets to Register for the Event are \\$25 each, and include:](#)

- One free beer or beverage
- Light Appetizers
- 2 Tickets for the Gift Basket Raffle

What - Fundraiser for the [Minnesota Elder Justice Center](#)

When - Monday, October 29 from 4pm-7pm

Where - Surly Brewing @ 520 Malcolm Ave SE, Minneapolis

[Get your ticket today!](#)

Can't make but want to support our work? You can donate [here](#).

MEJC Announcements

October Webinar 10/30/2018 | 11am-12pm (CT) "All in the Family: Understanding Financial Exploitation of Older Family Members"

[Registration is now open for the Minnesota Elder Justice Center's free October webinar.](#) Whether you work in social services, healthcare, the financial industry, the legal field, or you are concerned about a loved one, this webinar will help you better understand the prevalence of financial exploitation perpetrated by family members and loved ones, why it happens, and how to address and prevent it. MEJC Program Coordinator Marit Peterson will explain what you need to know about the most common form of financial exploitation of older adults.

Professional educational credit (CEU/CLE) may be available. [Visit our website for more information.](#)

MINNESOTA
ELDERJUSTICE
CENTER

Objectives

- **3:15 – 4:00 | “Understanding Elder Abuse as a Public Health Issue”**

Attendees will:

- 1) Understand what makes Elder abuse a Public Health Crisis
- 2) Analyze how a public health approach can help with the prevention of Elder Abuse
- 3) Analyze policy considerations in light of treating Elder Abuse as a Public Health Crisis – including the steps stakeholders (state agencies, advocates, service providers, lawmakers, others) can take in creating a public health approach to preventing Elder Abuse

Background & Context

- ▶ Public Health Language has long been used by advocates to describe the problem
- ▶ Fighting Forest fires vs. Asking how the fires are being started
- ▶ Recent MN Senate Hearing on OHFC Improvements and Changes
 - ▶ [59:20 \(video\)](#)

Background & Context

- ▶ #2018MNCHC – Where is Elder Abuse
- ▶ Elder abuse is largely missing from the broader public health community conversations. Challenge is on us to build connections within that community.

Group Conversation: How do we prioritize a Public Health response focused on Primary Prevention Strategies?

- ▶ *(1) What would a state-wide public-health response to elder abuse look like?*
- ▶ *(2) What policy changes/additions are needed to support a state-wide public health response to elder abuse?*

Why is Elder Abuse a Public Health Crisis?

- ▶ Health Outcomes Consequences of Elder Abuse:
 - ▶ Increased morbidity
 - ▶ Increased mortality
 - ▶ Years of Potential Life Lost
 - ▶ Quality of Life

Quality of Life

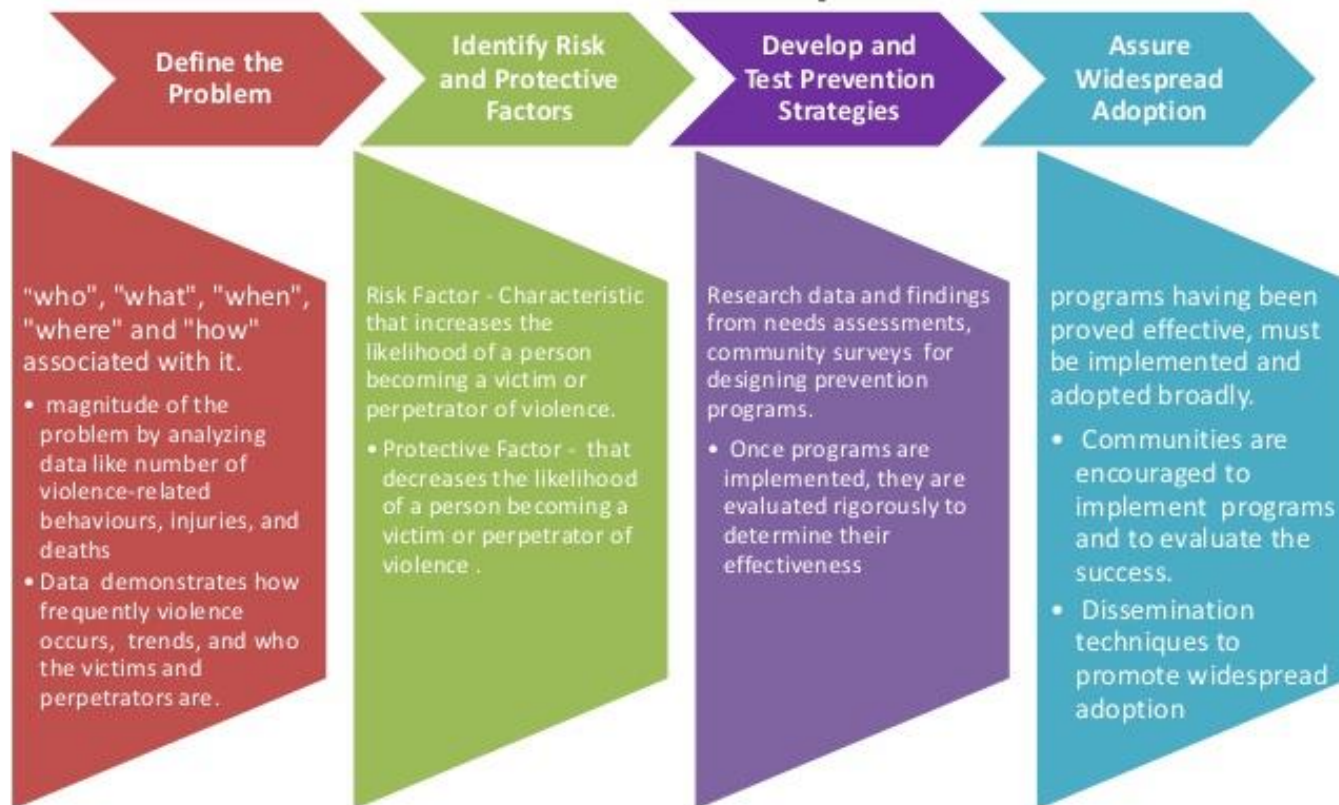
- ▶ Declining functional ability
- ▶ Increased dependency and sense of helplessness
- ▶ Increased depression and psychological decline

Costs to society

- ▶ Survivors of elder abuse have higher rates of hospitalization and institutionalization
 - ▶ ~\$5.3 Billion
- ▶ Survivors have increased reliance on other public programs
 - ▶ ~ \$10 Billion

ACL 2018; Connolly 2014

PHM for violence prevention



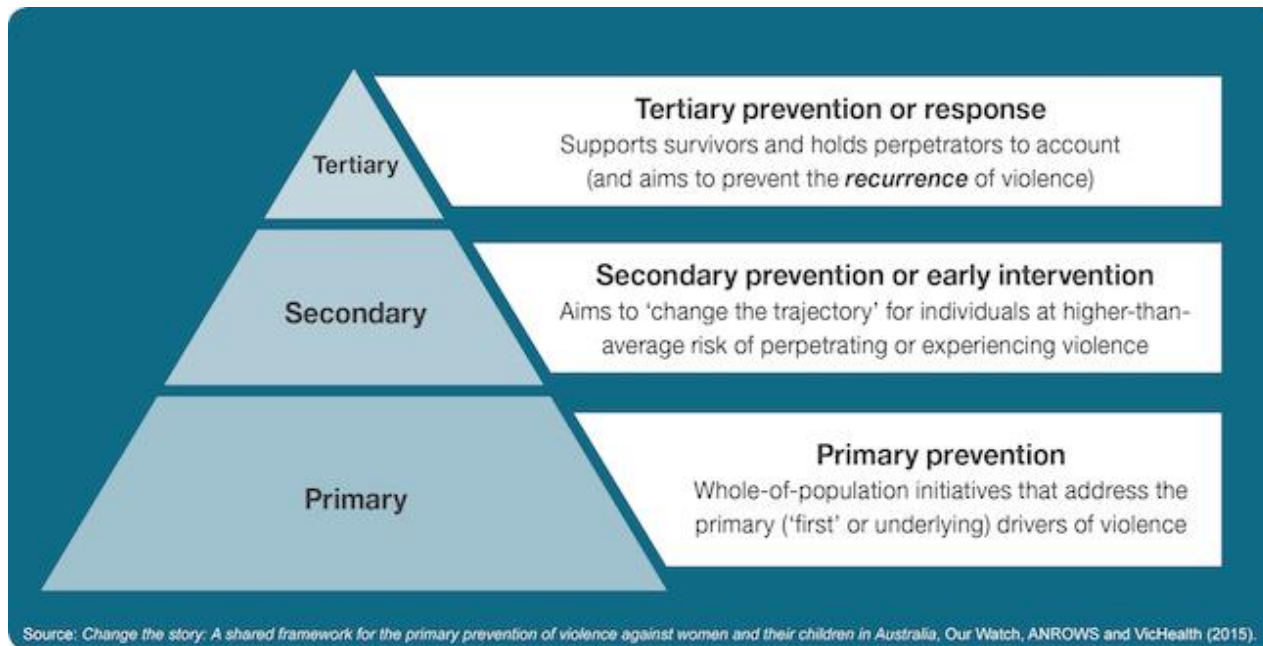
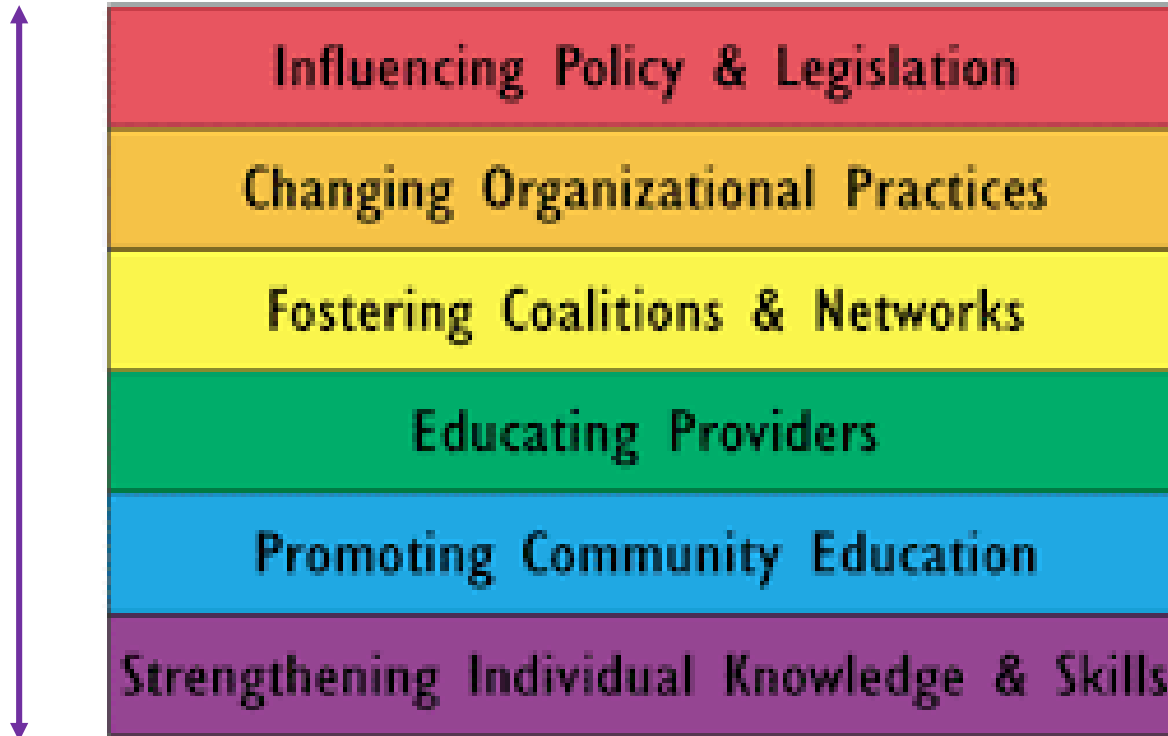


Figure 2 The relationship between primary prevention and other work to address violence against women

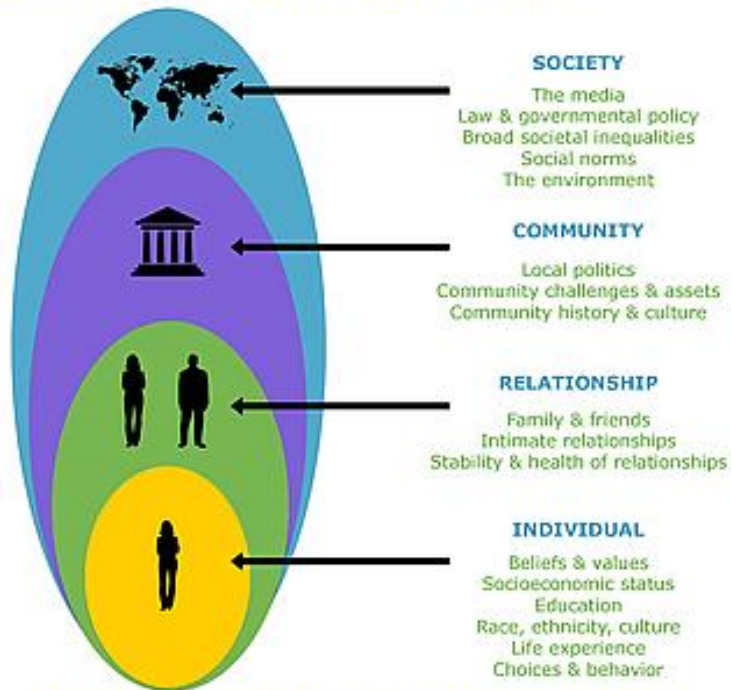
Primary, Secondary, Tertiary Prevention

The Spectrum of Prevention



SOCIAL-ECOLOGICAL MODEL OF PUBLIC HEALTH

Health depends on more than just genes and medical care: everything from federal policy to community resources impacts our health.



A plan to address challenges in public health should explore all these levels!

Adapted from an image by the CDC

Gaps in PH responses

- ▶ CDC, NIH, Private entities have spent billions to develop public health responses to child abuse and domestic violence compared to elder abuse
- ▶ Shortage of workforce trained to identify, address, prevent and study elder abuse

Connolly, 2014

Gaps

- ▶ 10x number of pediatricians vs geriatricians (2013)
 - ▶ Number of geriatricians declining
 - ▶ Most pediatricians trained on recognizing child abuse
 - ▶ Very few geriatricians are trained in recognizing elder abuse

Eldercare Workforce Alliance, 2013

Growth of Older Adults

- ▶ The Administration on Aging expects that by 2030, the U.S. population over age 65 will have doubled from 2000, with older adults representing 19% of the population.

Needs

▶ Data Collection/Research

▶ Elder Abuse research*:

- ▶ NIA, \$1.1 million (.0001% of budget)
- ▶ CDC, \$50,000 (.0008% of budget)
- ▶ NIJ, \$450,000 (+\$1.2 million other DOJ funds)

▶ Prevention & Intervention Programs

- ▶ Evidence-based
- ▶ Outcome and Process evaluation

▶ Supportive Policy Infrastructure

*Connolly, 2014

Components for Effective PH Program Implementation

- ▶ Innovation
- ▶ Technical Package
- ▶ Managing Performance
- ▶ Partnerships
- ▶ Communication
- ▶ Political Commitment

Frieden, 2014

MINNESOTA
ELDERJUSTICE
CENTER



Society is like a building, we can improve it with support beams working together that keep everyone safe

- ▶ Adult Protective Services
- ▶ Advocacy Organizations
- ▶ Law Enforcement
- ▶ Financial Institutions
- ▶ Medical Staff
- ▶ Facility Staff
- ▶ Concerned Citizens

VAA Through the Lens of Prevention

- ▶ Out main policy responses in Minnesota focus on Secondary and Tertiary responses
 - ▶ Example: VAA focuses mainly on responding to reports of abuse, neglect, and exploitation for a narrow subset of older (and vulnerable) adults who are at risk of abuse, neglect, financial exploitation

VAA Through the Lens of Prevention

- ▶ Policy Responses to other Public Health Problems focusing on Prevention
 - ▶ “sin” taxes on alcohol and tobacco
 - ▶ Limits on Sugary Soft Drink sizes
 - ▶ Investment in Urban green spaces reduce crime and findings show it does not “spread”
 - ▶ Understanding violence prevention as reducing opportunity

Group Conversation: How do we prioritize a Public Health response focused on Primary Prevention Strategies?

- ▶ *(1) What would a state-wide public-health response to elder abuse look like?*
- ▶ *(2) What policy changes/additions are needed to support a state-wide public health response to elder abuse?*

Contact Us

Sean Burke | 612-412-2111

Minnesota Elder Justice Center

651-440-9300

www.elderjusticemn.org